

HEE EM's Approach to Recognition of Trainers July 2015

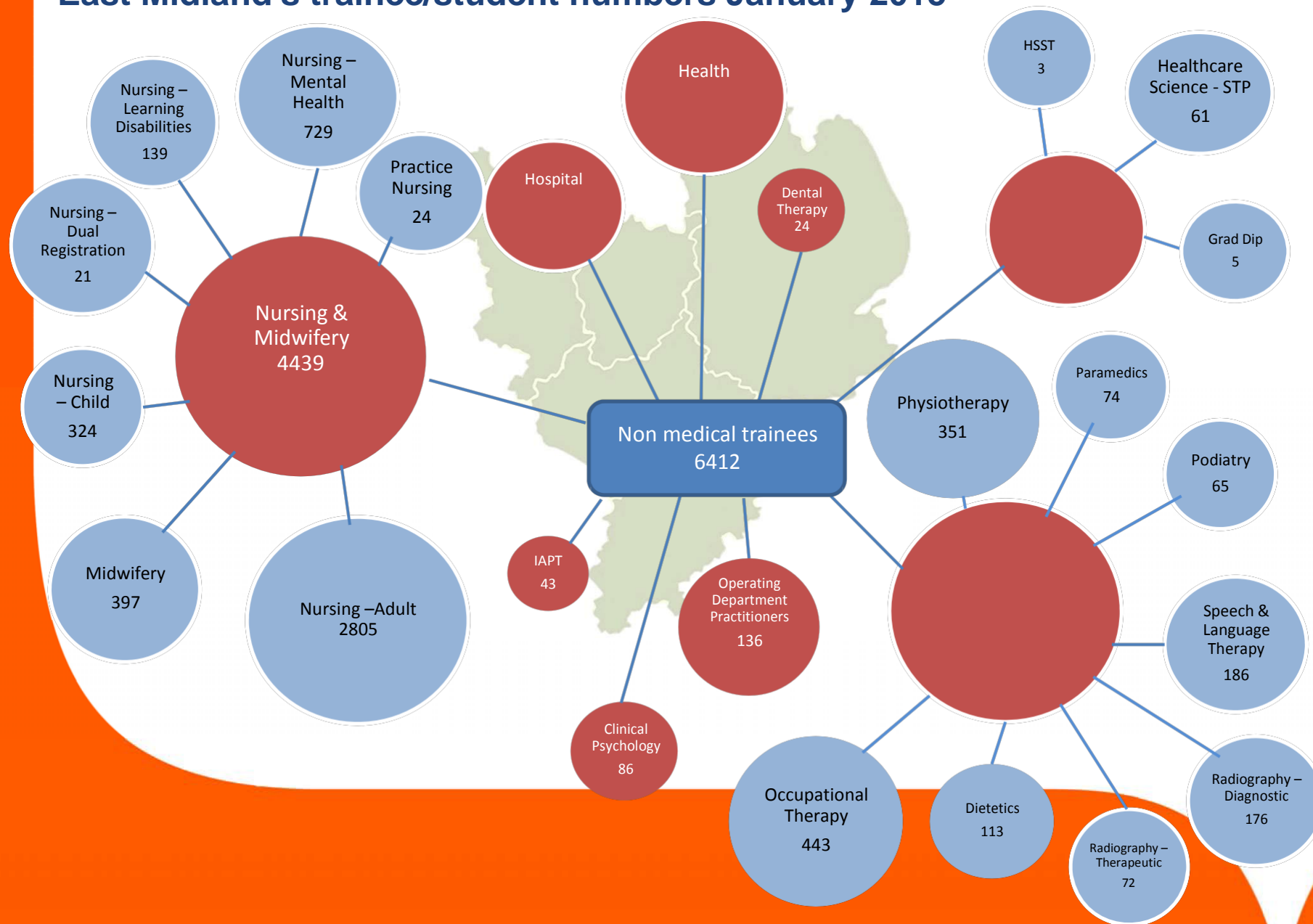


Presented by:

Dr Dan Kinnair, Associate Postgraduate Dean

Jill Guild CMrg FCMI, Head of Quality and Regulation

East Midland's trainee/student numbers January 2015



**Non medical trainees
6412**

**Nursing &
Midwifery**

Adult Nursing 2805

Mental Health Nursing 729

Learning Disability Nursing
139

Child Nursing
324

Dual Registration Nursing
21

Midwifery
397

Practice Nursing 24

**Scientists
74**

HSST
3

STP
66

Graduate Diploma
5

**Others
419**

Health Visitors
91

Dental Therapists
24

Operating Dept. Pract.
136

IAPT
43

Pharmacy
39

Clinical Psychology
86

**Allied Health Professionals
1480**

Diagnostic Radiography
176

Paramedics
74

Physiotherapy
351

Occupational Therapy
443

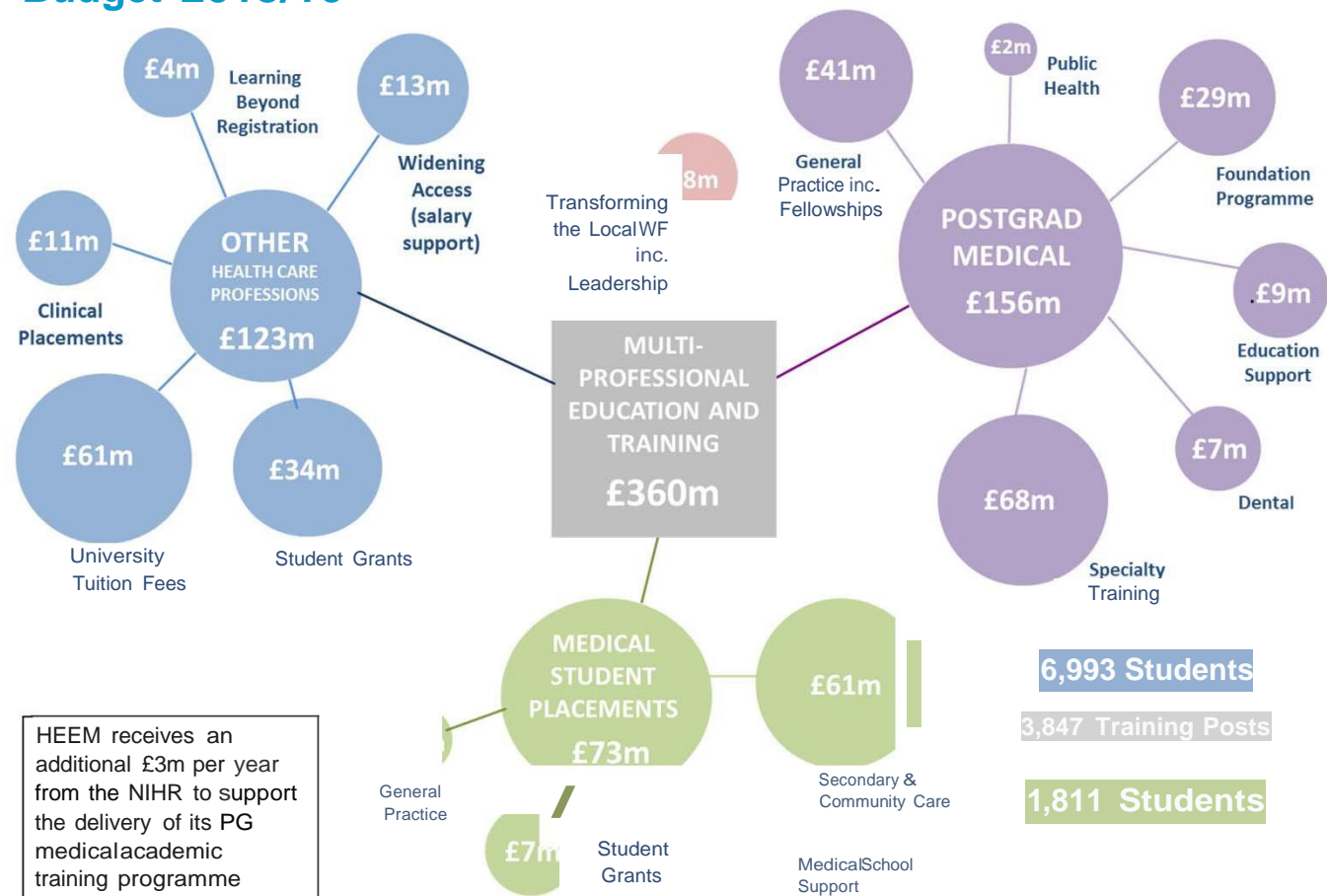
Therapeutic Radiography
72

Dietetics
113

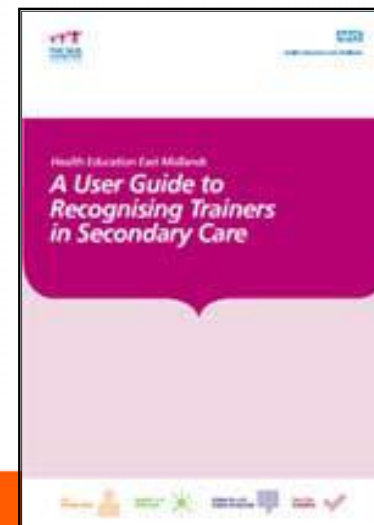
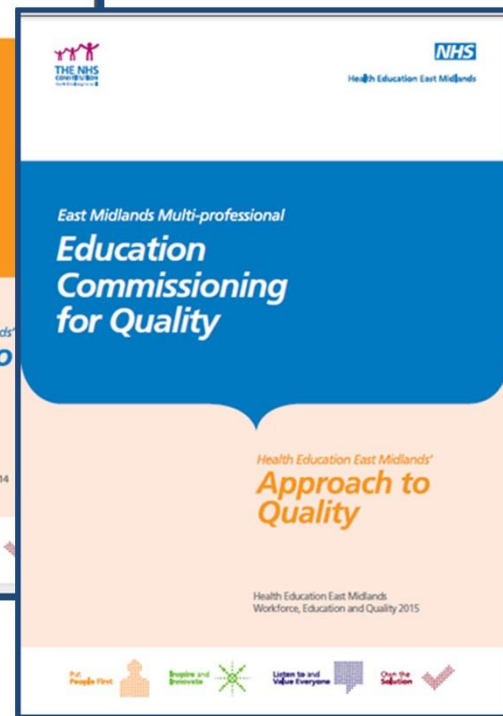
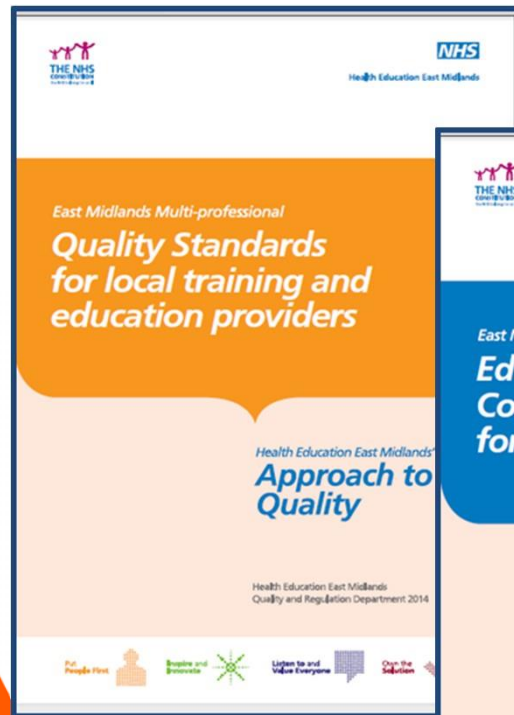
Podiatry
65

Speech & Language Therapy
186

Health Education East Midlands Education & Training Budget 2015/16



HEE EM's approach to driving up quality and supporting educators



Named Clinical Supervisors

1. Agreed a 5 year Revalidation Cycle for trainers
2. Different approaches for GP versus Secondary Care
3. Secondary Care – variety of online training packages
4. Secondary Care – written into LDA 0.125PAs per trainee (30 minutes per week)
5. Role enshrined in Annual appraisal and Job plan
6. Three-yearly equality and diversity training



Named Educational Supervisors

Secondary Care

- Agreed 0.25 Pas per trainee per week in LDA
- Enshrined in Job plan and Annual appraisal
- Agreed a 5 year Revalidation Cycle
- Courses to become approved as a named ES
- Mechanism to approve new courses/providers – menu of options
- 24 hours CPD every 5 years to remain up to date
 - Demonstrated through appraisal
 - 3yearly E+D training



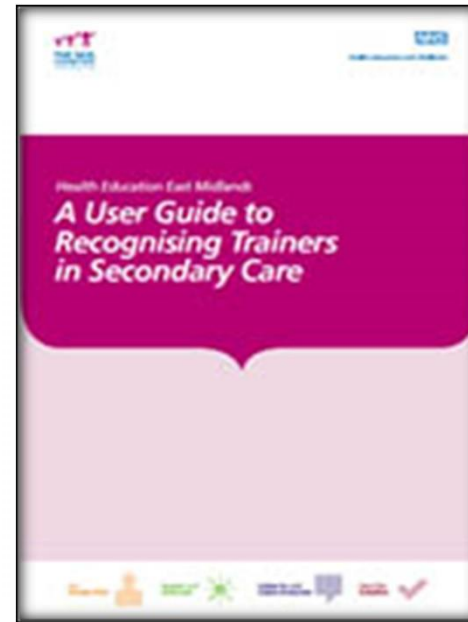
Partnership with University of Nottingham and the Royal College of GPs

- Package of 8 online interactive modules
- Initially developed as the introduction to the Masters level degree in Medical Education 9th module developed with HEE EM on PG medical education
- Will be used as the accrediting course for new educational supervisors
- Access for all staff in East Midlands



What has HEE EM offered?

- HEEM trainers days
 - ARCP, Revalidation, Careers Toolkit
- Training Support Service Master-classes
- ARCP Chairs Training
- HEE EM Educator Fellowships
- Speciality School Training Days
- Guidance booklets
- Virtual Learning Environment
- Full engagement with Trusts
- Support for Recognition Trust leads



1st Quality Showcase



Best in show

Patient story



Recognising Educators as leaders



Fellowships



Market Stalls of great practice



Thank you

-

**Any
questions?**

A large orange decorative shape on the left side of the slide, consisting of a vertical bar that curves into a wide base with a small upward-pointing curve on the right side.

**Play videos of Medwise
and VLE if we have
time!!!**



Dan.kinnair@nhs.net



jill.guild@nhs.net

Follow us @HEEM_Quality 



<https://www.eastmidlandsdeanery.nhs.uk/page.php?id=1769>